



SAILING INSTRUCTIONS

ZULULAND YACHT CLUB INHACA YACHT RACE 2018

INHACA ISLAND TO RICHARDS BAY
29 March - 1 April 2018

Organised by Zululand Yacht Club under the Auspices of Sailing KZN and South African Sailing (SAS)

1. ORGANISING AUTHORITY

- a. The Race is organised by Zululand Yacht Club (ZYC) in association with Sailing KZN, and will be hosted by the Zululand Yacht Club in Inhaca and the welcoming club is Zululand Yacht Club in Richards Bay.

2. RULES

- a. The rules, as defined in the Racing Rules of Sailing 2017-2020 ("RRS") of the International Sailing Federation subject to changes made in terms of this Notice & the Sailing Instructions.
- b. The prescriptions and special regulations of South African Sailing (SAS), as may be applicable.
- c. The International Regulations for Preventing Collisions at Sea (IRPCS) as applicable in terms of this Notice and the Sailing instructions.
- d. In the event of dispute the rules shall take precedence in the reverse order above.

3. NOTICES TO COMPETITORS

- a. Notices to competitors before the start will be placed on the official Notice Board located at the ZYC main yacht club building (downstairs, next to the Restaurant hatch.) and at Ristorante Lucas, Inhaca Island.

Notices after the finish will be placed on the notice board in the ZYC main yacht club building (downstairs, next to the Restaurant hatch.)

4. CHANGES TO SAILING INSTRUCTIONS

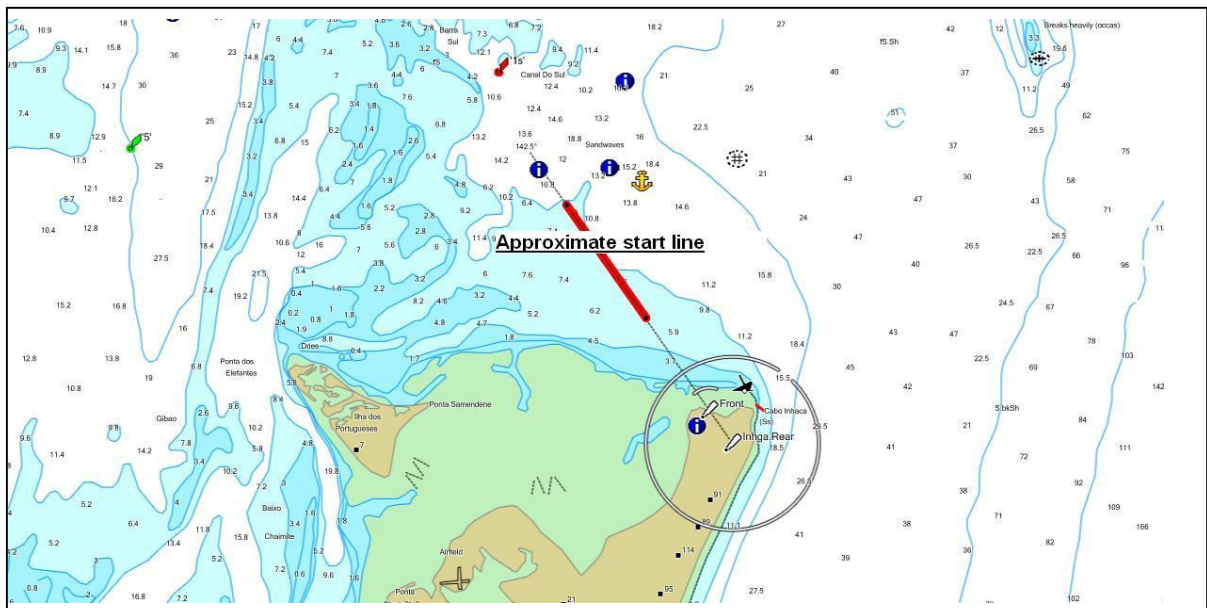
- a. Changes to the Sailing Instructions will be posted on the Official Notice Board, at the ZYC and/or on the notice board in Ristorante Lucas, Inhaca Island before 18h00 on 27th March 2018.

5. THE COURSE

- a. The Course shall be from the Start off the Island of Inhaca (Mozambique) to the Finish line (off Richards Bay Harbour) an approximate distance of 220 nautical miles.
- b. Attention is drawn to the wreck off Inhaca Light house, which is only partially visible at low tide.

6. THE START

- a. The starting line identification and position will be advised at the final briefing at Inhaca Island before the start of the Race. The following diagram indicates the approximate start line north of Inhaca Island.



7. TIME OF START

- a. The start signal for all classes will not be before 10h00 on 29th March 2018 and not later than 12:00 31 March 2018. Final starting times to be announced at compulsory briefing on 28 March 2018.

8. RADIO COMMUNICATION

- a. The Race Committee or Race Officer will issue radio communications prior to the start of the Race in the form of any sailing instruction amendments (if necessary) and/or the starting signals.

9. JOINING, LEAVING AND GOING ASHORE WHILST RACING

- a. Crew may leave by any means to take no further part in the Race, in the case of illness or injury, and may rejoin the yacht during the Race, but otherwise gear or stores may be taken to or from the yacht only by the efforts of her crew without outside assistance, and with the consent of the Race Committee.

10. USE OF AUTO STEERING DEVICES

- a. Auto Steering devices will be allowed to be used whilst racing. The use of an Auto Steering Device must be declared at the time of registration and will attract a 1% elapsed time penalty.
- b. The use of Engines will be allowed in the Rally Class only and must be declared on the official declaration form stating times started and stopped and elapsed time used. The use of engines will attract a time penalty in line with the ZYC PHRF Rally Handicapping rules.

11. STARTING SIGNALS

- a. All classes will start together and the warning signal will not be before 10H00 on 29th March 2016.
- b. The Race will be started by a Start Boat, which may be lying on station on the start line.
- c. The Race will be started in accordance with ZYC starting procedures and will be a radio start.
- d. The start will be on VHF Channel 06, or as specified, and the starting sequence will be as follows:-

Signal	VHF Radio Channel	Before Start	Action
Radio Call up	16	15 minutes	Standby on channel 06 or on specified channel *
Warning Signal	06 or *	6 minutes	Stand by to start counter
5 minute signal	06 or *	5 minutes	Check counter is correct & switch off engine/s
1 minute signal		60 seconds	Prepare for the start
10 second count down	06 or *	10 seconds	Start Boat will count down every second from 10 to Zero seconds
Start	06 or *	0 seconds	

12. YACHTS ARRIVING LATE FOR THE START

- a. A yacht which has been delayed and has not been able to arrive in the vicinity of the starting line when the signal is made six minutes before the start; may use her engine or be towed towards the vicinity of the

starting line for the purpose of enabling her to cross the starting line under sail alone up to one minute before the start of the Race.

- b. A delayed yacht availing herself of this privilege shall cease to use her engine or be towed (up to 500m from the start line) and then make a complete 360-degree turn before crossing the starting line. A yacht so starting shall report the circumstances to the Race Committee after the Race, who shall decide whether she is regarded as a bona fide starter.

13. RECALLS

- a. Individual recalls will be announced by the Start Boat on VHF Channel 06
- b. General recalls will be announced by the Start Boat on VHF Channel 06
- c. At the end of the General Recall on VHF Channel 06 the Start Boat will immediately announce the Warning signal (as per item 9 in the Sailing Instructions.)

14. THE FINISHING LINE

- a. All yachts are required to contact either of the following individuals at least one hour prior to finishing the Race as they will be facilitating the time keeping at the finish Line.

Richards Bay Port Control ~ VHF Channel 12 or 16

More names to be identified and will be posted on the notice boards.

- b. The Finish Line shall be an imaginary line between the white light on the South breakwater; information obtained from Hydro graphic chart reference number INT 7571 / SAN 1033 [FI 3s 16m 6M Beacon (N)] and the green light on the North breakwater; information obtained from Hydro graphic chart reference number INT7571 / SAN 1033 [FI (2)G. 5s 16m 6M] at the entrance to Richards Bay harbour.
- c. All competitors are required to record their finishing time (South African Standard Time and or GPS equivalent time) and, if known, the names of the yachts finishing immediately ahead of and behind them on the Declaration Form (see attached.)
- d. The finishing time shall be validated with the skipper's signature and shall be countersigned by one of the crew aboard that yacht.
- e. Please take note and be aware of the wreck that is located on the north side of the harbour entrance. It is clearly marked by a black and red wreck marker buoy [FI (2) 5s] and is also displayed on the Hydro graphic chart reference number INT 7571 / SAN

1033.

- f. Refer to annexure E for the finish line position.

15. TIME LIMIT

- a. The cut-off time, by when competitors in all divisions must have crossed the finish line in order to be classified as official finishers, will be 52 hours after the official starting time. Any yacht failing to cross the finish line by this time will be regarded as not having completed the Race or Did Not Finish.
- b. The Race Committee may, however, extend the time limit should they deem it necessary to do so.

16. ARRIVAL IN RICHARDS BAY

- a. Before crossing the finishing line, all yachts must contact "Richards Bay Port Control" on VHF Channel 12 or 16 and obtain permission to enter the harbour. Only once obtained, may you enter the port and then you must proceed directly to the Zululand Yacht Club Wharf to await Customs and Immigration clearance.
- b. At no time shall any crew be allowed to disembark from their yachts until the SAPS Water Wing has cleared the yacht.

17. PROTESTS

- a. All protests will be written on the official form, available from the Race Secretary at the ZYC Office situated at the Zululand Yacht Club. Completed Protest Forms must be lodged with the Race Office no later than one and a half hours after the recorded finish time of the protesting yacht.
- b. RRS 44.2 will apply for the period of the start, until 120 minutes after the starting signal.
- c. Protest Hearing times and Venues will be posted on the Official Notice Board at the Zululand Yacht Club, within the shortest possible time of receiving the Protest document.
- d. Decisions of the jury will be final as provided in rule 70.4 (b).
- e. A yacht, which commits any of the following infringements, will have her elapsed time increased by 0.25%;
 - i. Failure to return to the start correctly after starting prematurely.

- ii. Failure to submit the Declaration form within the required time period.

18. CUSTOMS AND IMMIGRATION AFTER FINISHING

- a. All crew of all yachts must remain within the ZYC premises until cleared by Customs and Immigration.

19. SAFETY

- a. The event will be sailed under the SAS Category A Safety requirement.
- b. All boats shall be equipped with:
 - i. A handheld GPS Unit with 12 fully charged batteries
 - ii. A handheld Compass
 - iii. A handheld VHF Radio with fully charged power supply.
- c. All EPIRBs shall have the units' bracket permanently fixed to the boat's structure in such a position as to offer easy access.
- d. The Liferaft shall be tethered at all times during the race to a suitable position on the boat in terms of its operating instructions, and the Liferaft shall at all times be so fitted and positioned to allow a deployment time of no more than 15 seconds.

20. CLEARANCE PROCEDURE

- a. No yacht will be permitted to start the race unless the required documents as described in the Notice of Regatta have been lodged with the Race Secretary by close of registration, in addition to all documents as stated in the Notice of Race.

21. DECLARATION

- a. The Declaration Form will be completed and handed to the Race Secretary at the ZYC within one and a half hours of the yacht's finishing time.

22. RETIREMENT

- a. Yachts retiring from the race will notify the Race Committee as soon as possible by one of the following means:
 - i. Richards Bay Port Control VHF Channel 12
 - ii. Race Committee Chairman to be appointed.

23. YACHTS COMPLETING THE RACE BUT NOT ENTERING RICHARDS BAY

- a. Yachts completing the Race but not entering the Port of Richards Bay must report this to the Race Committee upon crossing the Finish Line.

The Race Declaration Form (see attached) must be faxed to the Zululand Yacht Club on arrival in Durban or homeport within 24 hours after completing the Race and/or before 12h00 on 1st April 2018. If there is any undue delay in lodging this declaration, the yacht may be treated as having failed to complete the course or

Did Not Finish.

24. GENERAL INFORMATION: Does not form a part of the Sailing Instructions
- a. Prize giving will take place no later than 18h00 on 1st April 2018 in the Zululand Yacht Club hall.
 - b. Trophies / Special awards will be handed out at the discretion of the Organising Committee
 - c. Moorings information ~ Details to be finalised and information will be available on/or before the 21st March 2018 from the Race Secretary.
 - d. ZYC Race and Office details:
Race Secretary ZYC Office
Telephone (035) 788 0256
Facsimile (035) 788 - 0254
PO Box 10387 / Meerensee / 3901
E-mail info@zyc.co.za
 - e. Annexure
 - A. Entry Form,
 - B. Crew List
 - C. Indemnity Form,
 - D. Declaration Form,
 - E. Approximate Position of the Start Line,
 - F. Position of the Finish Line.